



CCS Presentation Systems, Inc.

Product Spotlight

SMART Mobile, Height Adjustable Floor Stand for the i Series



Flexibility and Mobility

Have you ever wished that your SMART Board were slightly lower to the floor?
Have you ever wanted to move your SMART Board from one area of your

We've Moved and
EXPANDED our L.A. and
O.C. Offices!

In August, we moved our L.A. and O.C. offices to a new HQ location in the City of Hawthorne. Among other features, this office includes a new state-of-the-art training center to support our customers' growing demand for professional development.

It also houses our corporate HQ, so it will also be our new remit-to address. The new address and phone numbers are:

3331 Jack Northrop Avenue
Hawthorne, CA 90250

(424) 675-2600 Phone
(424) 456-3844 Fax
(888) 454-4489 Toll Free



New Hawthorne
Location

As always, you can also visit and join our online community, at [SMARTERClassrooms](#). Sign up to continue your training

classroom to another? Imagine having the ability to not only adjust the height of your SMART Board to accommodate different users, but also to move it from one area of your classroom to another.

Combine mobility and flexibility with this mobile, height-adjustable floor stand, which moves the projector and interactive whiteboard as one. With the push of a button, you can quickly adjust the stand to accommodate people of differing heights and those who are seated or mobility challenged.

today - and every day of the month. And if you don't already receive this newsletter directly, please:



Ask your local sales rep for more information about the SMART Mobile Height Adjustable Floor Stand!

AND now:



January/ February Professional Development Calendar

Los Angeles

SMART Board Basics -- January 10: 9 a.m. - 12 p.m. and February 7: 9 a.m. - 12 p.m.

SMART Board Beyond the Basics -- January 11: 9 a.m. - 12 p.m. and February 8: 9 a.m. - 12 p.m.

SMART Board Curriculum Integration --
January 11: 1 p.m. - 4 p.m. and February 8: 1 p.m. - 4 p.m.

SMART Response Basics -- January 10: 1 p.m. - 3 p.m. and February 7: 9 a.m. - 12 p.m.

SMART Document Camera -- January 12: 9 a.m. - 11 a.m.

San Diego

SMART Board Basics -- January 24: 9 a.m. - 12 p.m. and February 21: 9 a.m. - 12 p.m.

SMART Board Beyond the Basics -- January 26: 9 a.m. - 12 p.m. and February 22: 9 a.m. - 12 p.m.

SMART Board Curriculum Integration -- January 26: 9 a.m. - 12 p.m. and February 22: 1 p.m. - 4 p.m.

SMART Response Basics -- January 24: 1 p.m. - 3 p.m. and February 21: 1 p.m. - 3 p.m.

San Jose

SMART Board Basics -- January 26: 10 a.m. - 1 p.m. and February 17: 1 p.m. - 4 p.m.

SMART Board Beyond the Basics -- January 27: 10 a.m. - 1 p.m. and February 16: 2 p.m. - 5 p.m.

SMART Board Curriculum Integration -- January 27: 2 p.m. - 5 p.m. and February 16: 10 a.m. - 1 p.m.

SMART Response Basics -- January 26: 2 p.m. - 4 p.m. and February 17: 10 a.m. - 12 p.m.

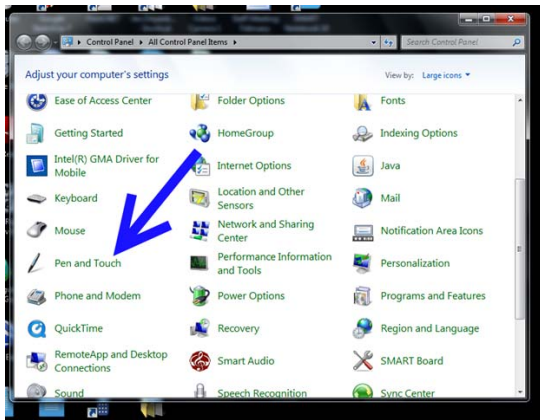
Tips and Tricks: Using your SMART Board with Windows 7

Are you running Windows 7? Have you noticed that there are sometimes issues with clicking and dragging in Notebook. Good news! You can adjust the way in which Windows 7 deals with touch devices so that these issues are eliminated!

To turn off the Flicks and Single Finger Panning features

1. Select Start > Control Panel > Pen and Touch. The Pen and Touch dialog box appears

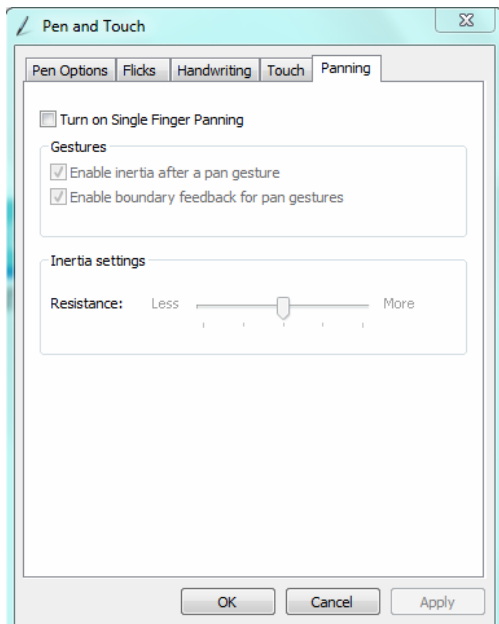
The Pen and



2. Select the Flicks tab, and then clear the Use flicks to perform common actions quickly and easily check box.

3. Select the Panning tab, and then clear the Turn on Single Finger Panning check box

4. Click OK.



Turn off Input Panel

When you click the Close button , Input Panel slides back to the edge of the screen. Here's what to do if you don't want the Input Panel tab or icons to appear anymore:

1. Open Tablet PC Input Panel by clicking the Start button . In the search box, type Tablet PC Input Panel, and then, in the list of results, tap Tablet PC Input Panel.
2. Tap Tools, and then tap Exit.

The Exit option doesn't appear on a Tablet PC, and might not appear if an external digitizer or a touch input screen is installed on your computer. If you don't see the Exit option, do the following:

1. Click Tools, and then tap Options.
2. In the Options dialog box, tap the Opening tab, clear the For tablet pen input, show the icon next to the text box and Use the Input Panel tab check boxes, and then tap OK.

Some more suggestions from SMART's website: <http://www.smarttech.com/kb/142575>

To see a video demonstration of Tips and Tricks, go to www.smarterclassrooms.com and log in.

Contact CCS:

Los Angeles/Orange County- (424) 675-2600/ (888) 454-4489
San Diego - (858) 565-6323 / (888) 293-8428
San Jose - (408) 545-0555 / (888) 657-1778

